

DYNISCO MODEL EPR3

Enhanced Push-Rod Design Melt Pressure Transducer

Description

Dynisco's model EPR3 high - temperature melt pressure transducer is offered as an alternative to its PT420 and PT460 series. The push - rod design is suitable for applications where the use of a filled system may not be desirable, such as the extrusion of food and medical products and the manufacture of photographic film. Model EPR3 is available in pressure ranges from 0 - 1,500 through 0 - 10,000 psi.

Features

- Better than $\pm 0.5\%$ accuracy
- Push - rod design
- Measures up to 750°F (400°C)
- All stainless steel, wetted parts
- Internal 80% shunt calibration

Benefits

- Reliable pressure measurement
- Ideal for medical, food and photographic film extrusion
- Ideal for high temperature processes
- Corrosion resistant
- Easy set - up



Specifications

Performance Characteristics

Ranges (psi): 0 - 1,500, 0 - 3,000, 0 - 5,000, 0 - 7,500, 0 - 10,000
Accuracy: $\pm 0.5\%$ FSO
Repeatability: $\pm 0.2\%$ FSO
Mounting torque: 100 inch - lbs. recommended, 250 inch - lbs. maximum

Maximum pressure: 150% full scale
Material in contact with pressure media: 17 - 4 PH stainless steel, Dymax® coated
Weight: 13.25 oz.



Electrical Characteristics

Configuration: Four active arm bonded Wheatstone bridge strain gage
Bridge resistance: Input: 345 Ohms minimum; Output: 350 Ohms $\pm 10\%$
Full scale output: 3.0 mV/V $\pm 2\%$
Zero balance: $\pm 5\%$ full scale

Excitation: 10 Vdc recommended, 12 Vdc maximum
Internal shunt calibration (R-Cal): 80% FSO $\pm 1.0\%$
Insulation resistance: 1,000 megohms at 50 VDC

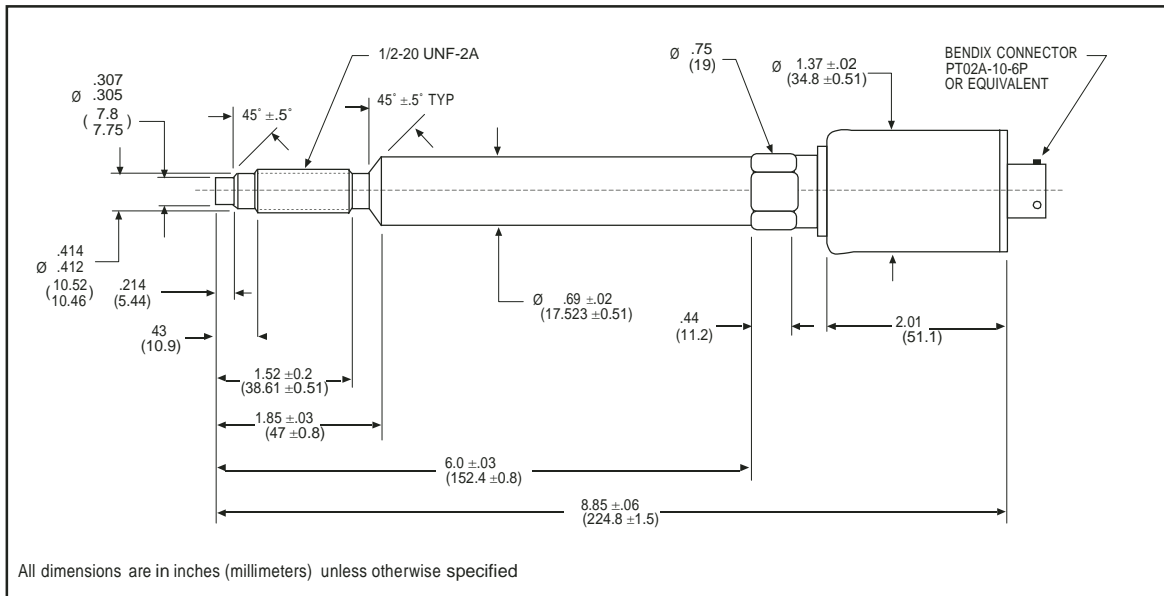
Temperature Characteristics

Transducer diaphragm:
 Maximum diaphragm temperature: 750°F (400°C)
 Zero shift due to temperature change: $\pm 1.0\%$ full scale/100°F ($\pm 2.0\%$ full scale/100°C)
 Sensitivity shift due to temperature change: $\pm 1.0\%$ full scale/100°F ($\pm 2.0\%$ full scale/100°C)

Electronics housing:
 Maximum temperature: 250°F (121°C)
 Zero shift due to temperature change: $\pm 1.0\%$ full scale/100°F ($\pm 2.0\%$ full scale/100°C)
 Sensitivity shift due to temperature change: $\pm 1.0\%$ full scale/100°F ($\pm 2.0\%$ full scale/100°C)

DYNISCO MODEL EPR3

Enhanced Push-Rod Design Melt Pressure Transducer



Ordering Guide

Model	Pressure Range (psi)		Rigid Stem	
	Code	Range	Code	Length
EPR3	1.5M	0 - 1,500		
	3M	0 - 3,000	6	6"
	5M	0 - 5,000	9	9"
	7.5M	0 - 7,500		
	10M	0 - 10,000		

Ordering Example: EPR3 - 3M - 6

- Mating connector P/N711600 or 6 - pin cable assembly sold separately.

Delivery

Express delivery. Call for delivery information on other configurations.



<http://www.aptus-hmi.com/>

Ctra.de Ribes,195 - 08520 LES FRANQUESES DEL VALLES (Barcelona – Spain)

Telf. + 34 93 840 25 24 - Fax + 34 93 8402503 - dynisco@aptus-hmi.com