



PT418 Series



Features

- Accuracy of better than $\pm 0.5\%$
- Oil fill meets FDA requirements
- DyMax™ coated convoluted SST wetted parts
- 0 - 1,000 to 0 - 10,000 psi
- 3.33 mV/V FSO

Benefits

- Reliable, repeatable pressure measurements
- Designed for extremely high process temperatures
- Ideal for medical and food applications
- Excellent abrasion resistance
- Wide variety of pressure ranges
- Easy to calibrate with local indicator

Description

The PT418 Series transducer is a $\pm 0.5\%$ sensor ideal for food or medical applications requiring simple installation, repeatability and reliability. The food grade oil fill material meets FDA requirements 21 CFR 178.3620, 21 CFR 172.878 and 21 CFR 573.680 for contact with food and medical products. The PT418 Series transducers provide the industry standard 3.33 mV/V signal designed to work with most pressure indicators. The PT418 comes equipped with an six pin bendix connector. Optional thermocouple or RTD configurations are available to provide melt temperature. The PT418 features a 1/2-20 UNF thread for installation in standard transducer mounting holes and can be supplied with a variety of other electrical connections, if desired.

Specifications

PERFORMANCE CHARACTERISTICS

Output: 3.33 mV/V $\pm 2.0\%$
 Input Voltage: 10 Vdc recommended, 12 Vdc maximum
 Accuracy: $\pm 0.5\%$ FSO*
 Repeatability: $\pm 0.2\%$ FSO
 Configuration: Four-arm bonded foil Wheatstone bridge strain gage
 Bridge Resistance: Input: 345 Ohms minimum
 Output: 350 Ohms $\pm 10\%$
 Over Pressure: 2 X FSO
 Zero Balance: $\pm 10\%$ FSO
 Internal Shunt Calibration (R-Cal): 80% FSO $\pm 1\%$
 Insulation Resistance: 1000 megohms @ 50 Vdc

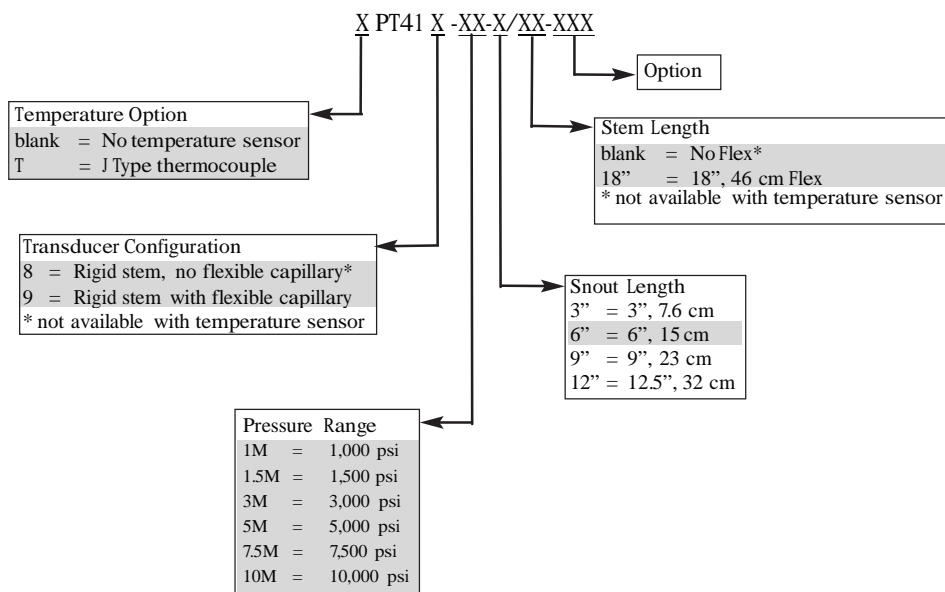
TEMPERATURE & MECHANICAL CHARACTERISTICS

Max Diaphragm Temperature: 527°F (275°C)
 Zero Shift (due to temperature change):
 36 psi/100°F Typical (65 psi/100°C)
 Electronics Operating Temperature: 250°F (121°C)
 Zero Shift Due to Temperature Change:
 $\pm 0.05\%$ FS/°F max ($\pm 0.1\%$ FS/°C max)
 Sensitivity Shift Due to Temperature Change:
 $\pm 0.02\%$ FS/°F max ($\pm 0.04\%$ FS/°C max)
 Mounting Torque: 500 inch/lbs. maximum
 Standard Wetted Parts: Inconel 718

*The organic oil fill may be susceptible to gas generation at high temperatures for extended periods which may affect zero value (and therefore accuracy). Request the product manual for a full explanation and recommended procedure to eliminate any observed offset.

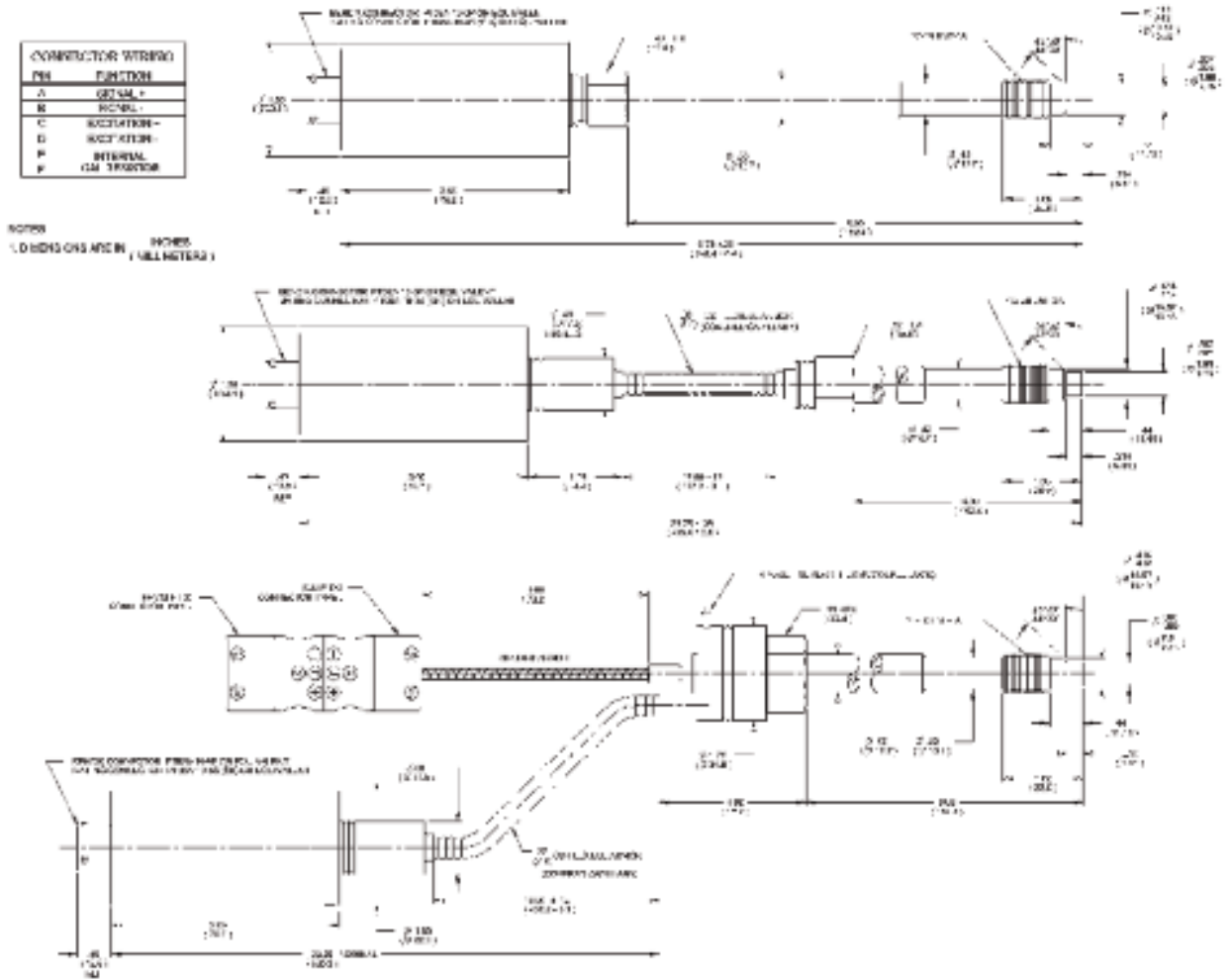


Ordering Guide



Standard mating connector Dynisco P/N 710700 or 8-pin mating connector cable assembly.

Shaded sections refer to standard configurations. Accuracy may be affected if non-standard configurations are used. For additional options please consult factory.



All dimensions are inches (mm).



<http://www.aptus-hmi.com/>

Ctra.de Ribes,195

08520 LES FRANQUESES DEL VALLES

Telf. 93 840 25 24 - Fax 93 8402503 - dynisco@aptus-hmi.com